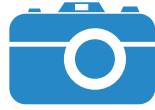




# PLANNING A RESEARCH-PRACTICE



## PARTNERSHIP



### Step 1: The Big Picture

#### ***Understanding Your "Why"***

- What does your organization want to learn?
- Why do you want to learn this information?
- How will this information ultimately be used?



## KNOWLEDGE

#### ***Your Context***

What are your organization's values, including values related to diversity, equity, and inclusion?

- What do you need from your research partner to ensure these values are incorporated in this project?



## VALUES

#### ***Understanding Your "Who"***

Who are your organization's stakeholders for research?

How would your stakeholders answer the following?

- What does your organization want to learn?
- Why do you want to learn this information?
- How will this information ultimately be used?



## STAKEHOLDERS

#### ***Information and Ownership***

What information do you need from your research partner to make informed decisions? (*e.g., options for study designs and type of information learned*)

- How will your organization prioritize sharing the information learned with those being researched?
- What do you need from your research partner to ensure this happens?



## POWER & EQUITY

Want more info?

Contact [linda.galib@urbaninitiatives.org](mailto:linda.galib@urbaninitiatives.org) or connect at [www.linkedin.com/in/lindagalib](http://www.linkedin.com/in/lindagalib)



# PLANNING A RESEARCH-PRACTICE



## PARTNERSHIP

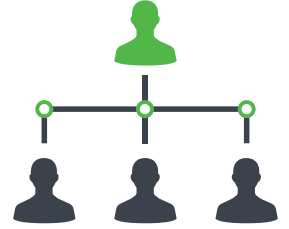


### Step 2: The Details



#### LEADERSHIP

- Who within your organization will be leading this partnership?
- Who will be the liaison with the external research partner? Is it the same person?
- What decision-making power does the liaison have and what support will they need?
- Who is responsible for managing the project? (*project plan, setting meeting times and agendas, etc.*)



#### STAFFING & CAPACITY

- What staffing resources will your organization be able to make available for this project? (*e.g., project liaison, study recruitment, data collection*)
- What staffing resources do you expect your external research partner to contribute?



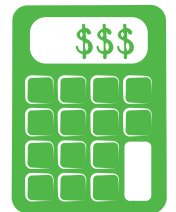
#### KNOWLEDGE & SKILLS

- What technical skills will your organization bring to the partnership? (*e.g., project management, study design, data collection, analysis, budgeting, fundraising*)
- What technical skills would you expect from your research partner?



#### FINANCIAL

- How much is your organization willing and able to spend on a research partnership? (*e.g., staff time on project, recruitment materials, data collection materials, participation incentives*)
- How much do you expect your external research partner to contribute financially?



#### TIMELINE

- Does your organization have a hard deadline of when need the research results by, or an ideal date of study completion?
- What needs to happen for that deadline to be met?



#### OWNERSHIP & LEGAL AGREEMENTS

- What type of agreement is necessary to document the roles and responsibilities of this partnership? (and is it legally binding?)
- What is your ideal data-sharing agreement? Will your organization ultimately own the data?