

Making sense of the map: Strategies for Ripple Effect Mapping analysis for systems change evaluations



Kristina Gelardi
Research Consultant
kgelardi@harderco.com



Gabriela Magaña
Research Assistant
gmagana@harderco.com

harder  co | community
research

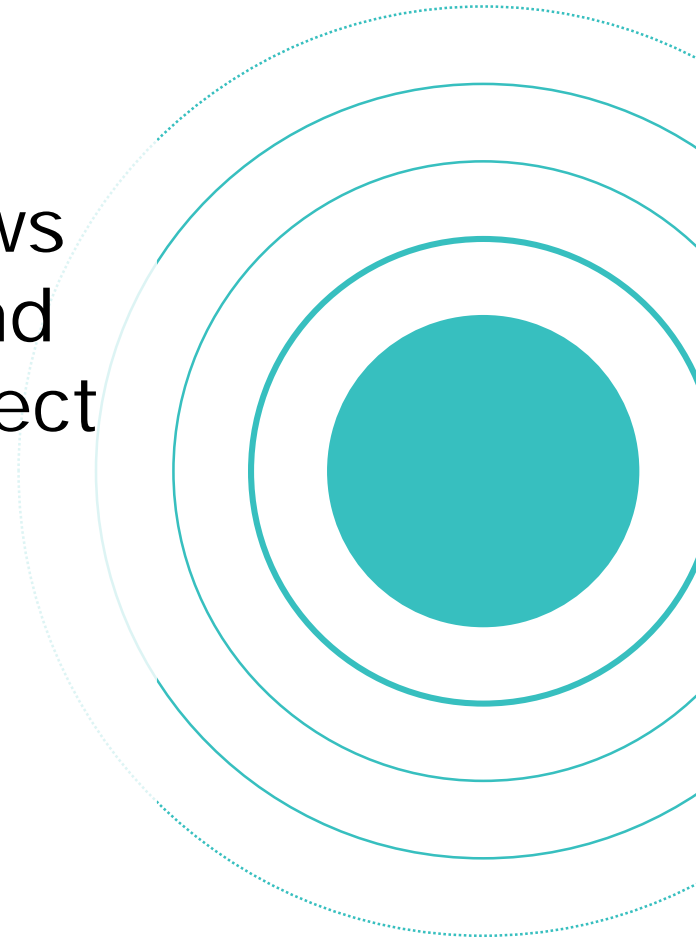


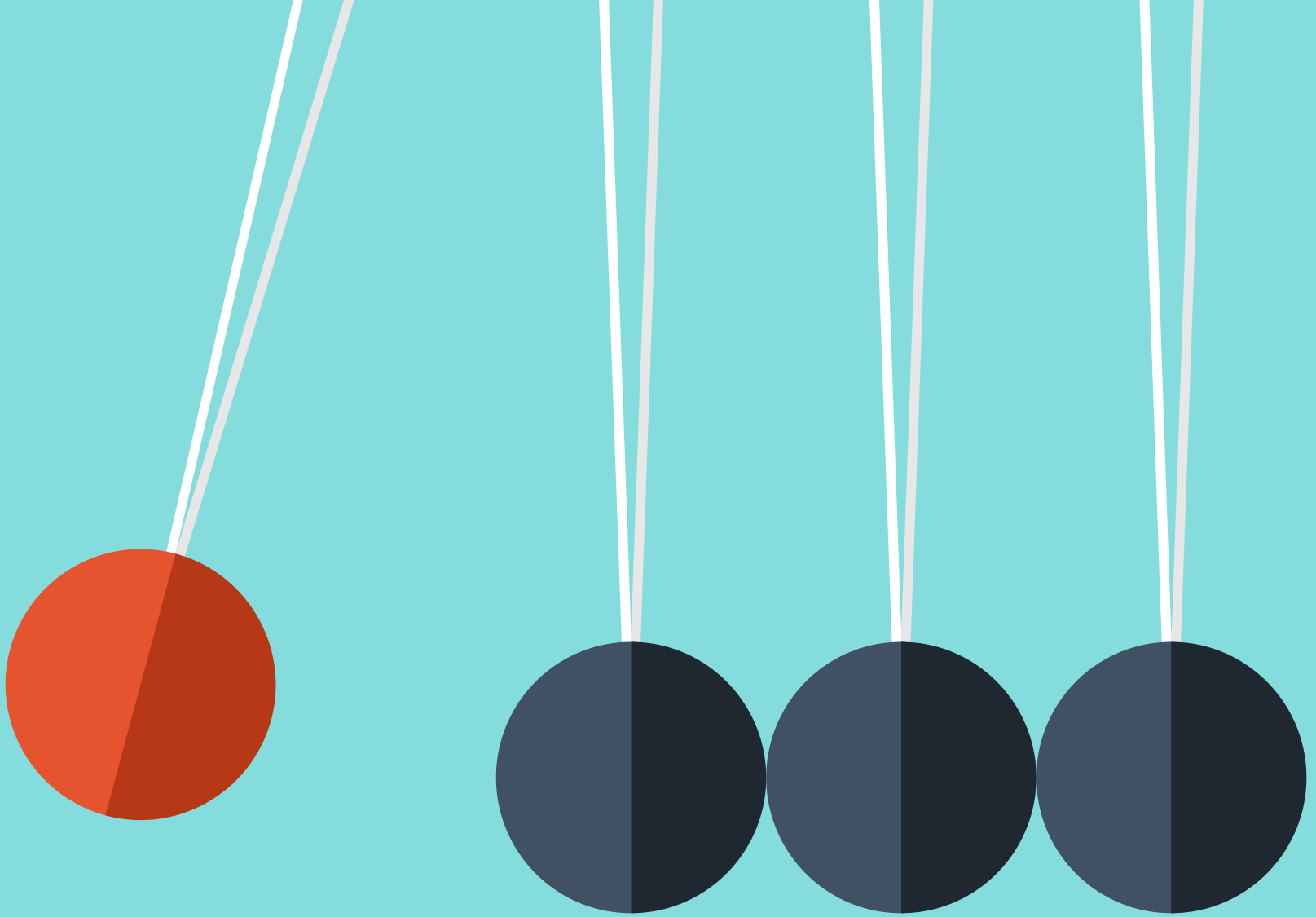


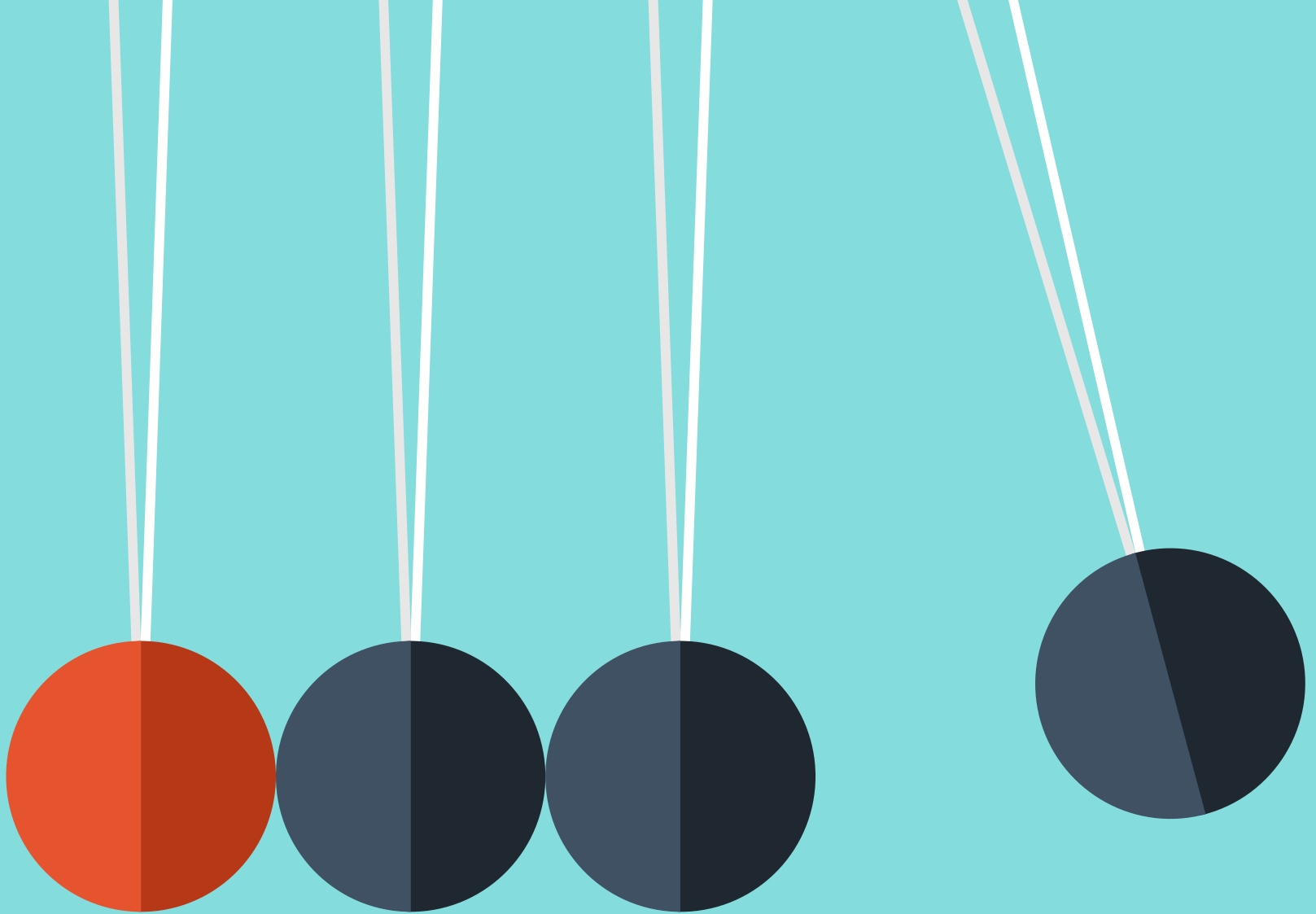
Purpose and Goals

ripple effect mapping

evaluation method that allows stakeholders to reflect on and map out the direct and indirect changes that resulted from their efforts







FIRST
San Joaquin



We wanted to learn ...

- What are people doing **differently**?
- What **effect** has it had on attitudes, behaviors, knowledge, and action?
- **Who** did it impact?

Documenting Impact



Individuals



Organizations



Systems

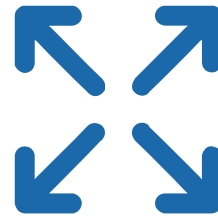
Using REM helped us to:



Bridge
gaps



Engage
providers



Expand
the story



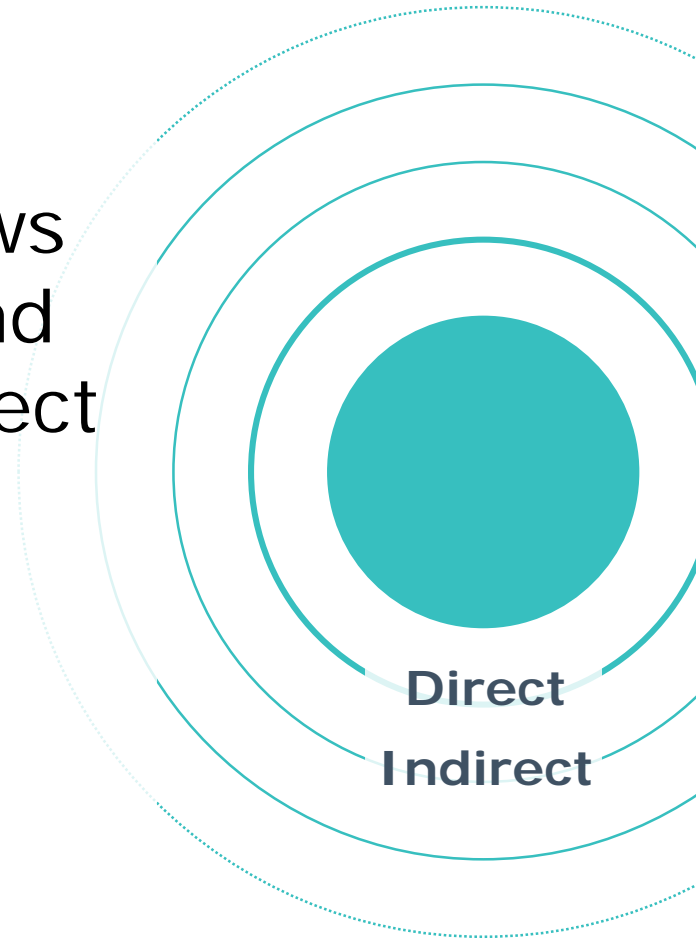
Understand
systems
change

A blue-tinted photograph of a group of people working together at a wooden table. The scene is filled with various items: papers with diagrams and text, a laptop, markers, and other office supplies. The people are leaning over the table, engaged in collaborative work. The overall atmosphere is one of focused teamwork and creative problem-solving.

Mapping the Ripples

Ripple Effect Mapping

evaluation method that allows stakeholders to reflect on and map out the direct and indirect changes that resulted from their efforts



Steps for REM

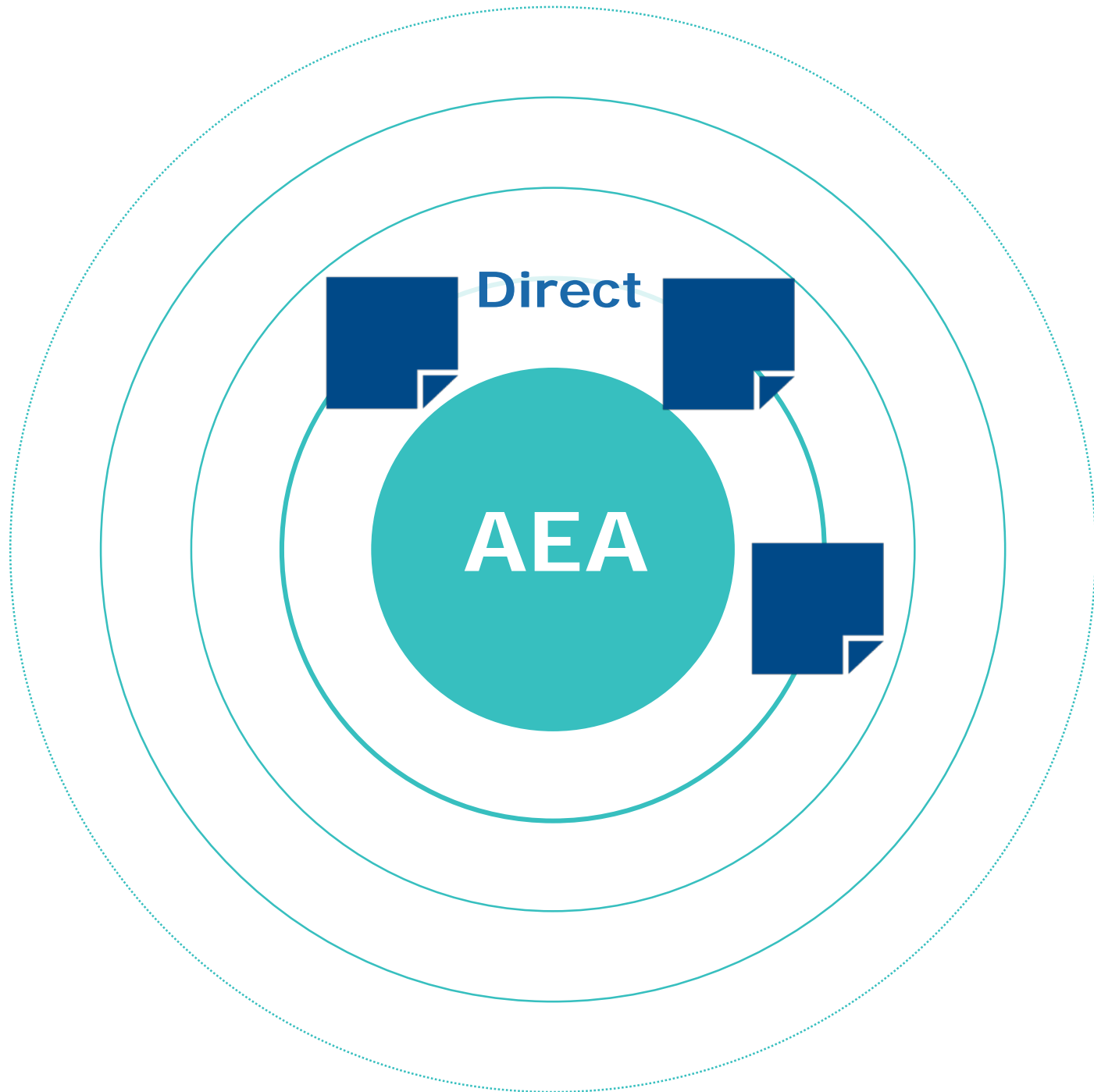
- Define your **categories**
- **Engage a group** in brainstorming impact
- **Capture ideas** on post-its
- Identify **direct** and **indirect** effects
- Create your **map**
- Discuss **relationships** between effects
- Consider what is **missing**

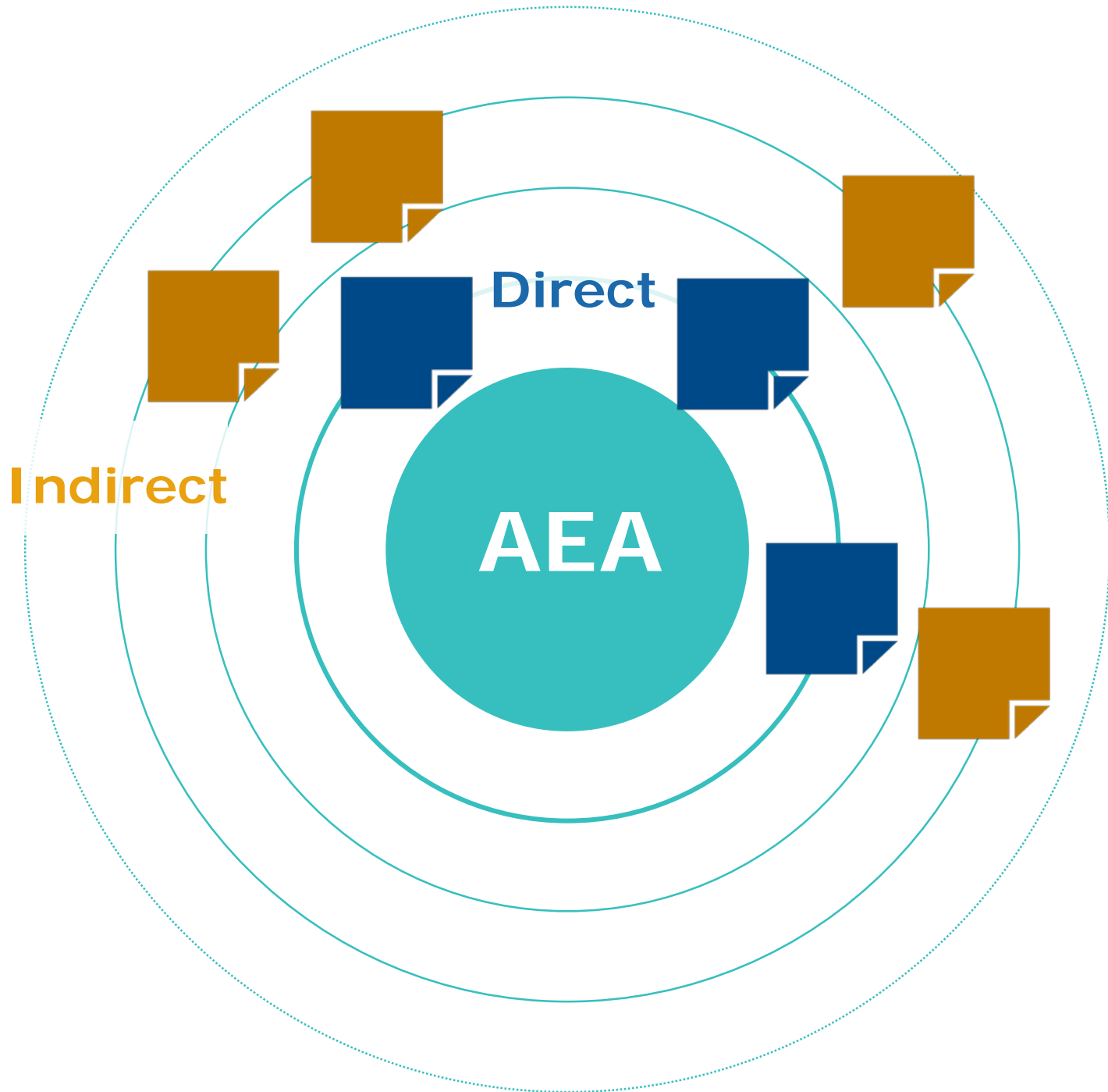


Individually **brainstorm the effects of AEA**. For example, how does AEA impact you? Your agency? Your clients?


(1 idea per post-it)







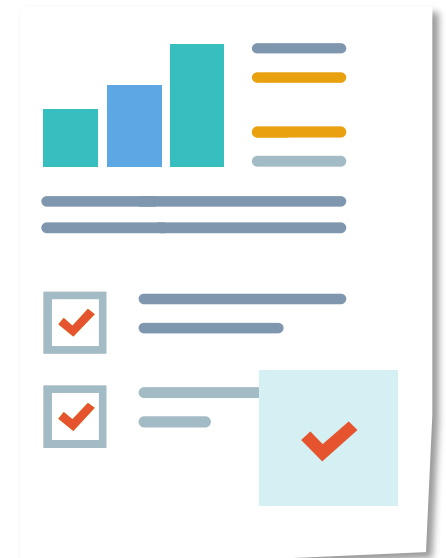
- What are people doing **differently**?
- What **effect** has it had on attitudes, behaviors, knowledge, and action?
- **Who** did it impact?



Analysis and Interpretation

Analyzing the Data

- What is the **story**?
- How has AEA made an **impact**?
- What has been identified as a **direct or indirect** effect?



Interpreting the Data

- What **questions** do you have about the map?
- What **barriers** did you face when trying to analyze the data?
- Were there any **surprising** or unexpected findings?

A blue-tinted photograph of a diverse group of people sitting in an audience. They are all looking towards the right side of the frame, and several are smiling. The text 'Group Conversation' is overlaid in white, bold, sans-serif font in the center of the image.

Group Conversation

Group Conversation

- What was your experience with this process?
- How might you use REM in the future?

Group Conversation

- What was your experience with this process?
- How might you use REM in the future?

A blue-tinted photograph of four people in a meeting. In the foreground, the back of a person's head and shoulders are visible. Three people are seated at a table in the background, looking towards the foreground. The text "Snowball Activity" is overlaid in white.

Snowball Activity

What did you learn through
this process that you hope to
implement after you leave this
room?

A blue-tinted photograph of a group of people sitting in a room, possibly a classroom or meeting. In the foreground, a person's hand is visible, gesturing with fingers spread. The background shows several other people, some looking towards the camera and others looking away. The overall atmosphere is professional and collaborative.

Wrap-Up

Key Takeaways

Ripple effect mapping...

- Bridges gaps in knowledge
 - Engages providers
 - Expands the story
 - Maps systems
-
- Slides and handout posted to AEA workshop site



A blue-tinted background image featuring a hand on the left side, with the index finger pointing upwards. The word "Questions" is written in a large, white, sans-serif font across the center of the image, partially overlapping the hand and the background.

Questions

Thank You!

