

The Evaluation Object

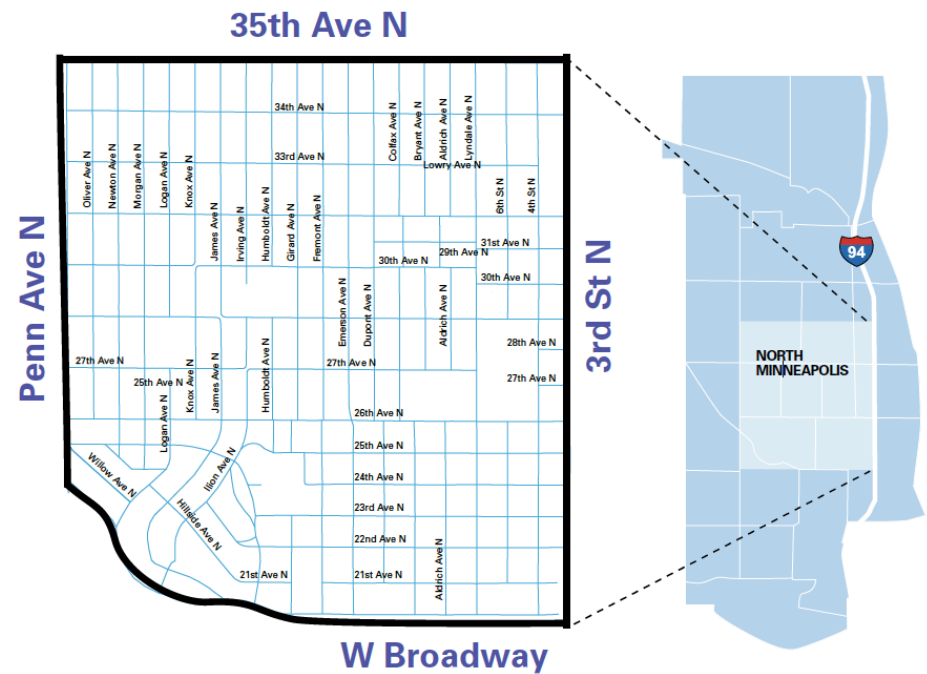
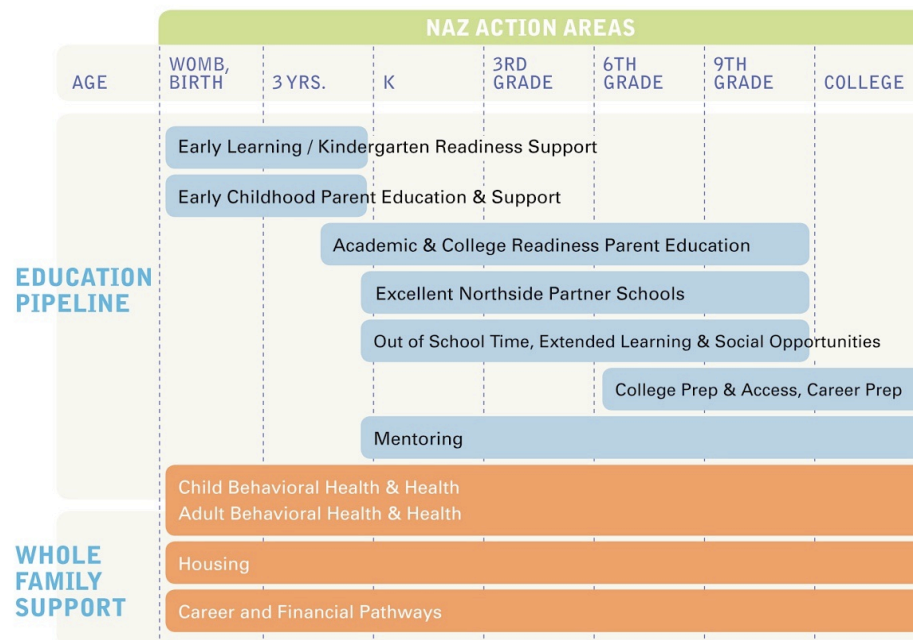
What is a Promise Neighborhood?

- A community of opportunity, centered around strong schools, that allows children to learn, grow, and succeed.
- Inspired by the model of the Harlem Children’s Zone, Promise Neighborhoods wrap children in high-quality, coordinated health, social, community, and educational support from the cradle to college to career.
- The federal grant program, begun in 2010 by President Obama, has awarded 58 place-based grants in the last three fiscal years (both for planning and for implementation).
- <http://www.promiseneighborhoodsinstitute.org/>

What is the Northside Achievement Zone (NAZ)?

- The NAZ Promise Neighborhood is a collaboration of organizations and schools partnering with families in a geographic “Zone” of North Minneapolis to prepare children to graduate from high school ready for college.
- Awarded a 5-yr, 28-million dollar implementation grant in Dec 2011.
- Comprised of 13 *Action Areas* (e.g. Housing), each represented by an *Action Team* made up of leaders of community Partner programs.
- External Evaluation by the Wilder Foundation, Internal Evaluation by the University of Minnesota.
- <http://northsideachievement.org/>

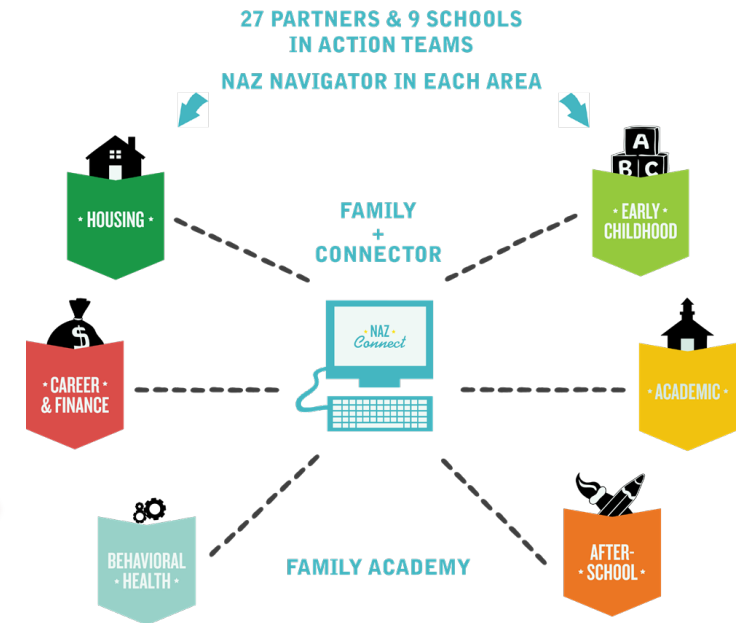
NAZ CONTINUUM



The Internal Evaluation Process

Internal evaluation team members work closely with each *Action Team* to:

- Set goal(s)
- Develop a *Solution Plan* for reaching those goals, based around evidence-based practices
- Monitor progress toward achieving each component of the *Solution Plan*
- Provide *Action Teams* with evaluation reports detailing progress for the group as a whole as well as for individual Partner programs. Reports reflect:
 - Fidelity: Are the services being provided the way we expected?
 - Scale: Are we serving the number of children and families we expected?
 - Efficacy: Do we see the results we expect?



1. Develop Goal(s) & Solution Plan

1. NAZ Central gathers an Action Team of service providers.
2. Action Team collects evidence of effective programs and practices.
3. Action Team drafts a Solution Plan, describing which services need to be provided and how they will be provided.

2. Peer Review & Adopt Solution Plans

1. UMN sends the Solution Plan to different experts across the country for review.
2. Feedback from these experts is collected and used to revise the Solution Plan.
3. The final Solution Plan is adopted by all partners in the Action Team who sign an agreement to follow the plan.

3. Implementation & Progress Monitoring

1. Action Team plans how all parts of the Solution Plan will be put into practice.
2. NAZ and UMN collect information from children/families about services in the Solution Plan.
3. UMN presents a report to NAZ, who determines where Partner programs need support or if the Solution Plan should be changed.

Roundtable Discussion Questions

- Questions about this evaluation design?
- Comments? Critiques? Alternative designs?
- What are some evaluation challenges that place-based coordinated service delivery programs like NAZ pose? How might we approach these challenges?
- What kinds of methodological and analytical tools would be useful when evaluating Promise Neighborhoods?
 - e.g. Ripple Effect Mapping, Network Analysis
- How can evaluators get involved in new Promise Neighborhood efforts?
- What role should internal evaluators play?