

Global Logic Model: Childhood Lead Poisoning Program

Early Activities

If we do...

Outreach

Screening

ID of elevated kids

Case manage EBLL kids

Later Activities

And we do...

Refer EBLL kids for medical treatment

Train family in in-home techniques

Assess environment of EBLL child

Refer environment for clean-up

Early Outcomes

Then....

EBLL kids get medical treatment

Family performs in-home techniques

Lead source identified

Environment gets cleaned up

Lead source removed

Later Outcomes

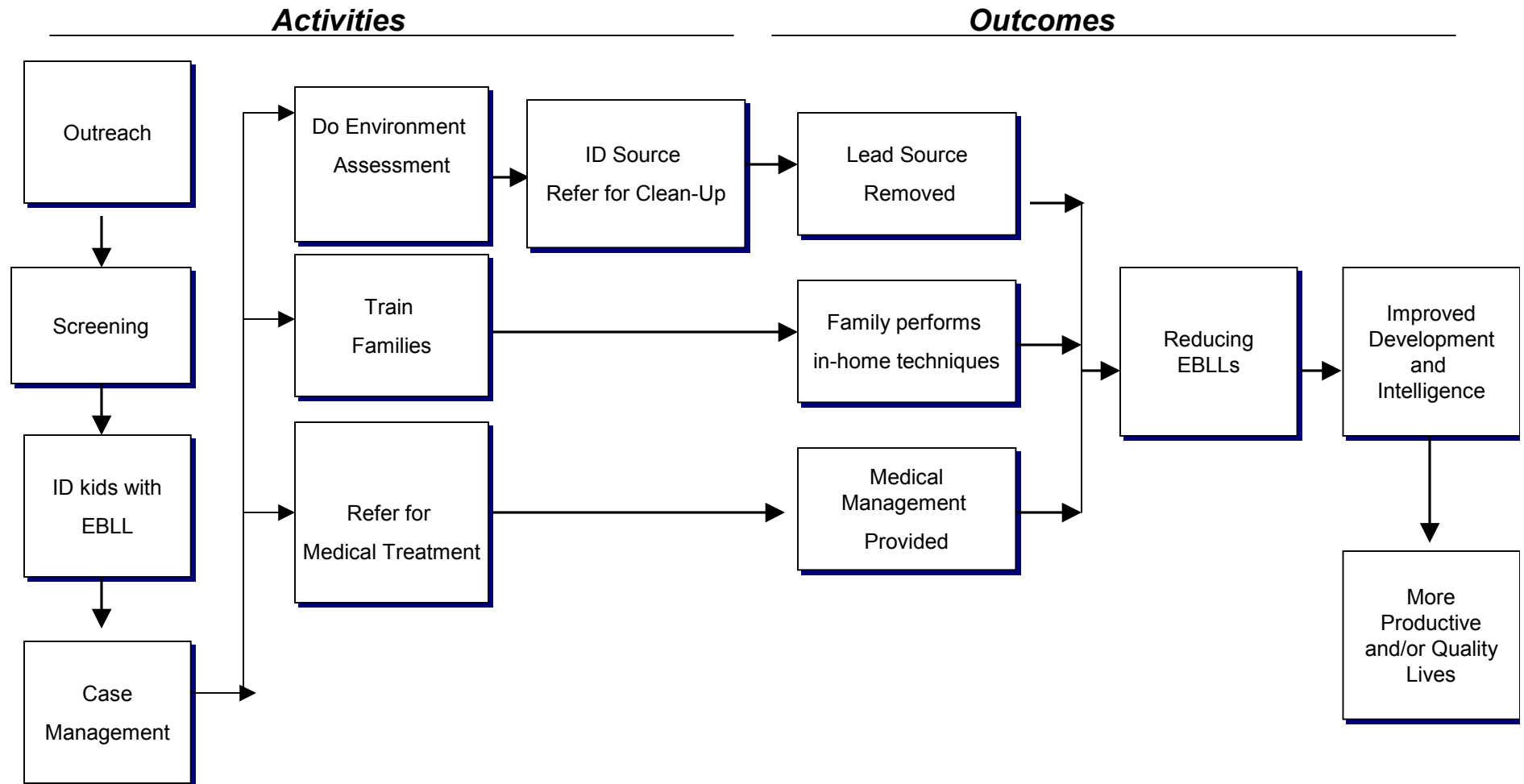
And then...

EBLL reduced

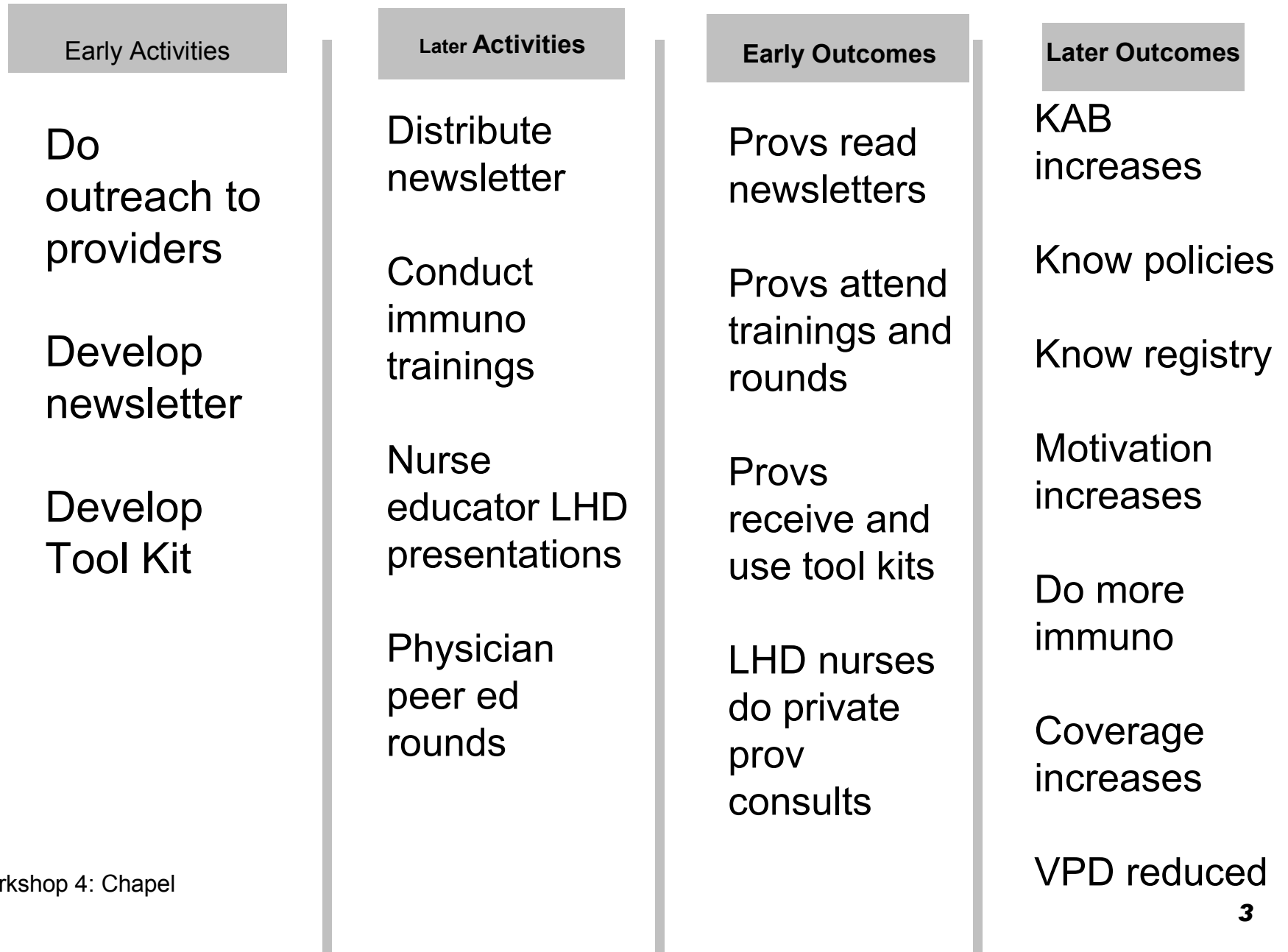
Develop'l slide stopped

Quality of life improves

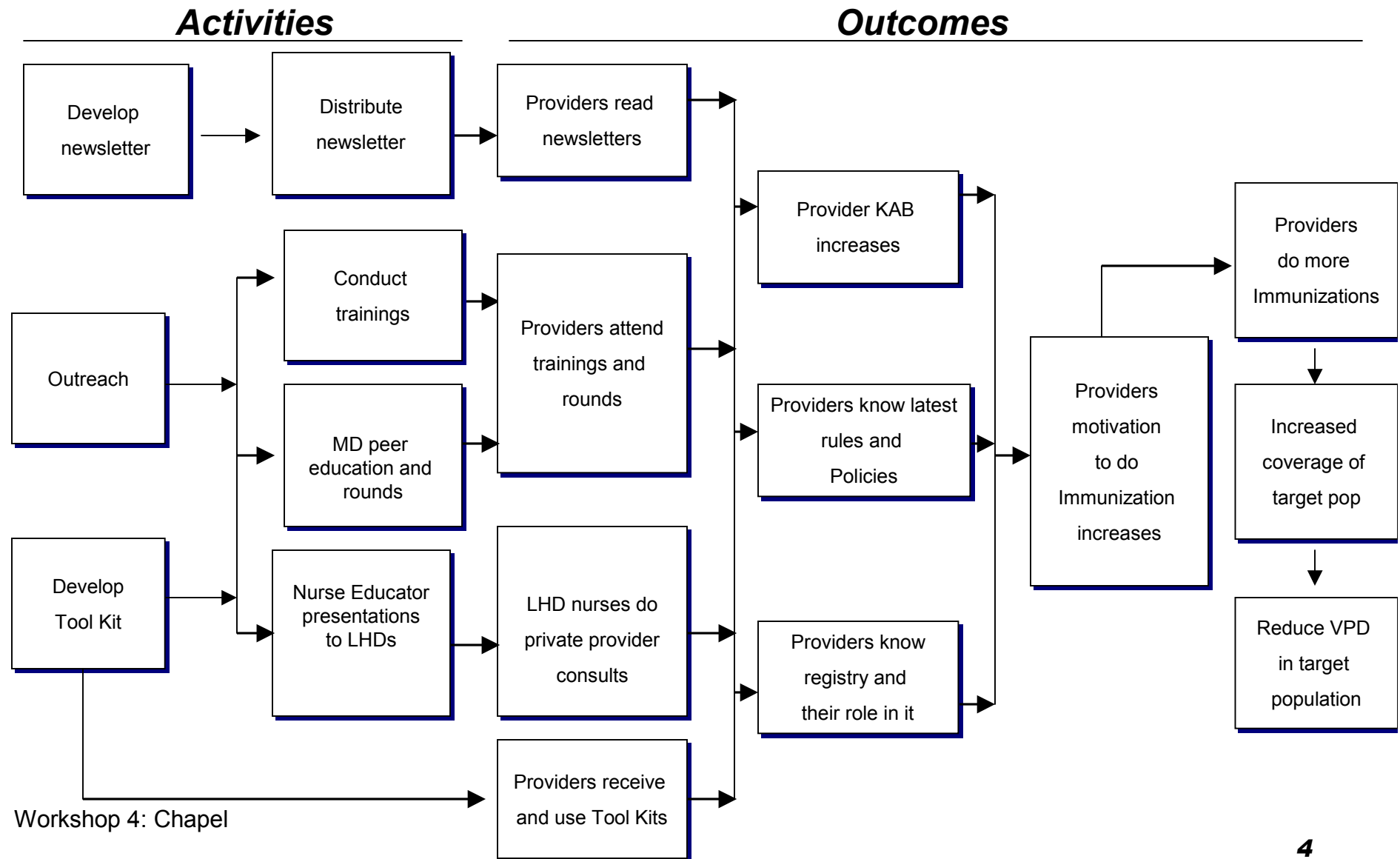
Lead Poisoning: "Causal" Roadmap



Global Logic Model: Provider Education



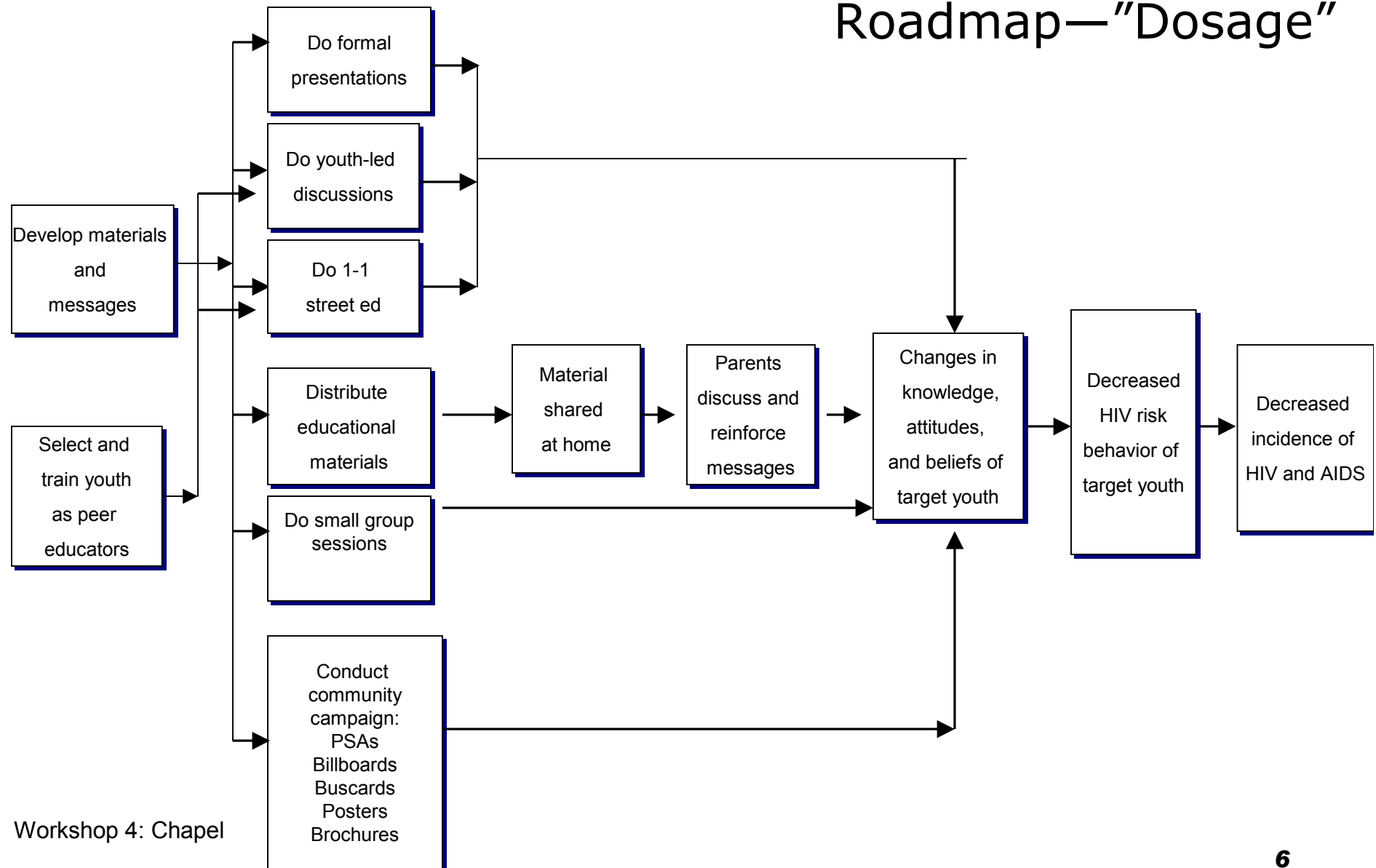
Provider Education: "Causal" Roadmap



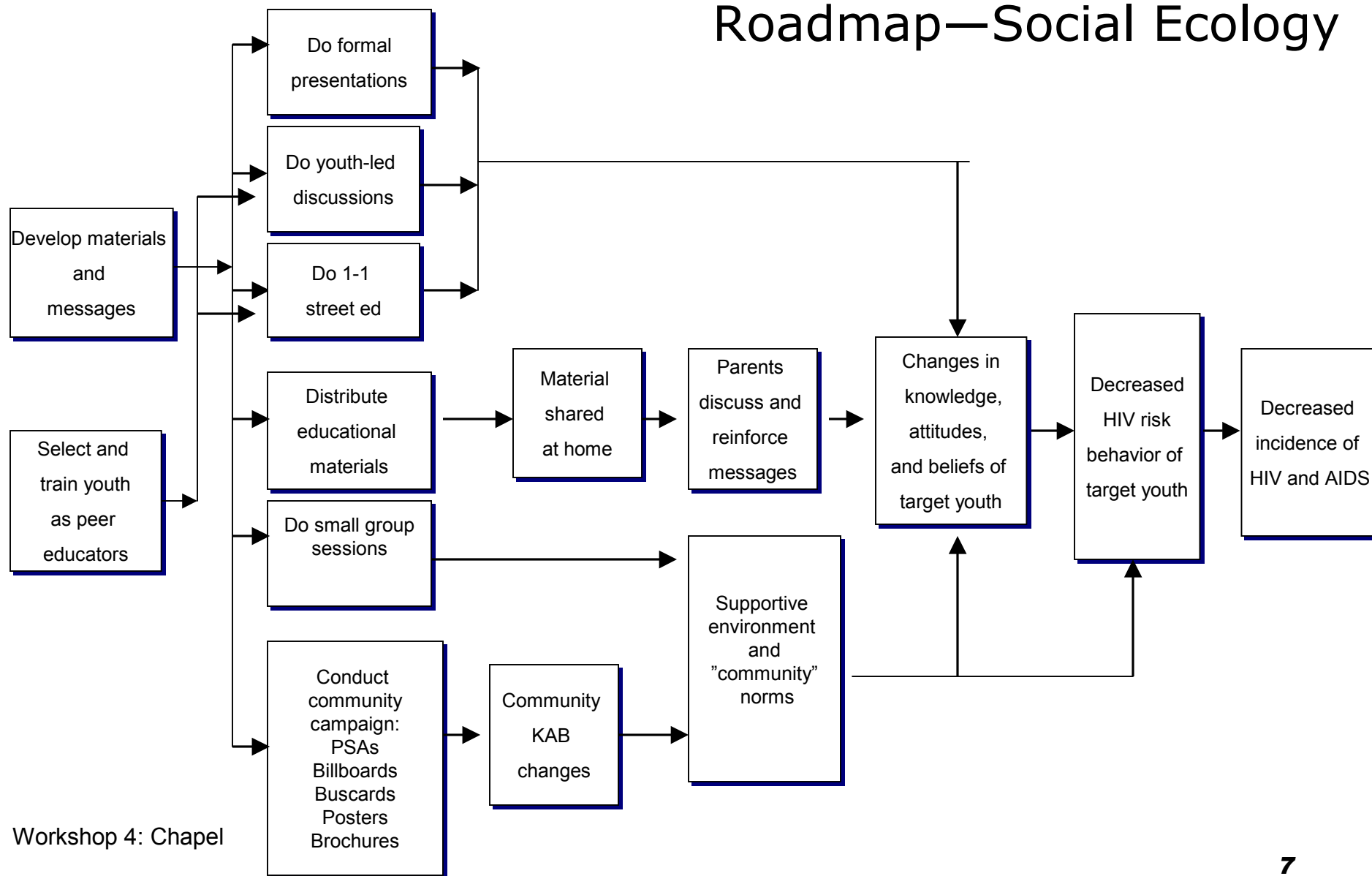
Global Logic Model: Eastside HIV/AIDS Prevention

Early Activities	Later Activities	Early Outcomes	Later Outcomes
<i>If we ...</i>	<i>And we...</i>	<i>Then....</i>	<i>And then...</i>
<p>Develop materials and messages</p> <p>Select and train youth as peer educators</p>	<p>Do formal presentations</p> <p>Do group discussions</p> <p>Distribute educational material</p> <p>Do youth-led education</p> <p>Do 1-1 street education</p> <p>Conduct community campaign:</p> <p> PSAs</p> <p> Buscards/billboards</p> <p> Posters/brochures</p>	<p>Educational materials are brought home and shared</p> <p>Change in knowledge about HIV and AIDS</p> <p>Change in attitudes and beliefs</p>	<p>Reduced HIV risk behavior</p> <p>Reduced incidence of HIV</p>

Eastside HIV/AIDS Prevention Program: "Causal" Roadmap—"Dosage"



Eastside HIV/AIDS Prevention Program: "Causal" Roadmap—Social Ecology





Helpful Resources

- NEW! Intro to Program Evaluation for PH Programs—A Self-Study Guide: <http://www.cdc.gov/eval/whatsnew.htm>
- Logic Model Sites
 - Innovation Network:
<http://www.innonet.org/>
 - Harvard Family Research Project:
<http://www.gse.harvard.edu/hfrp/>
 - University of Wisconsin-Extension:
<http://www.uwex.edu/ces/lmcourse/>
- Texts
 - Kellogg Foundation Logic Model Development Guide:
www.wkkf.org
 - W.K. Kellogg Foundation Evaluation Resources:
<http://www.wkkf.org/programming/overview.aspx?CID=281>
 - Rogers et al. Program Theory in Evaluation. New Directions Series: Jossey-Bass, Fall 2000
 - Chen, H. Theory-Driven Evaluations. Sage. 1990