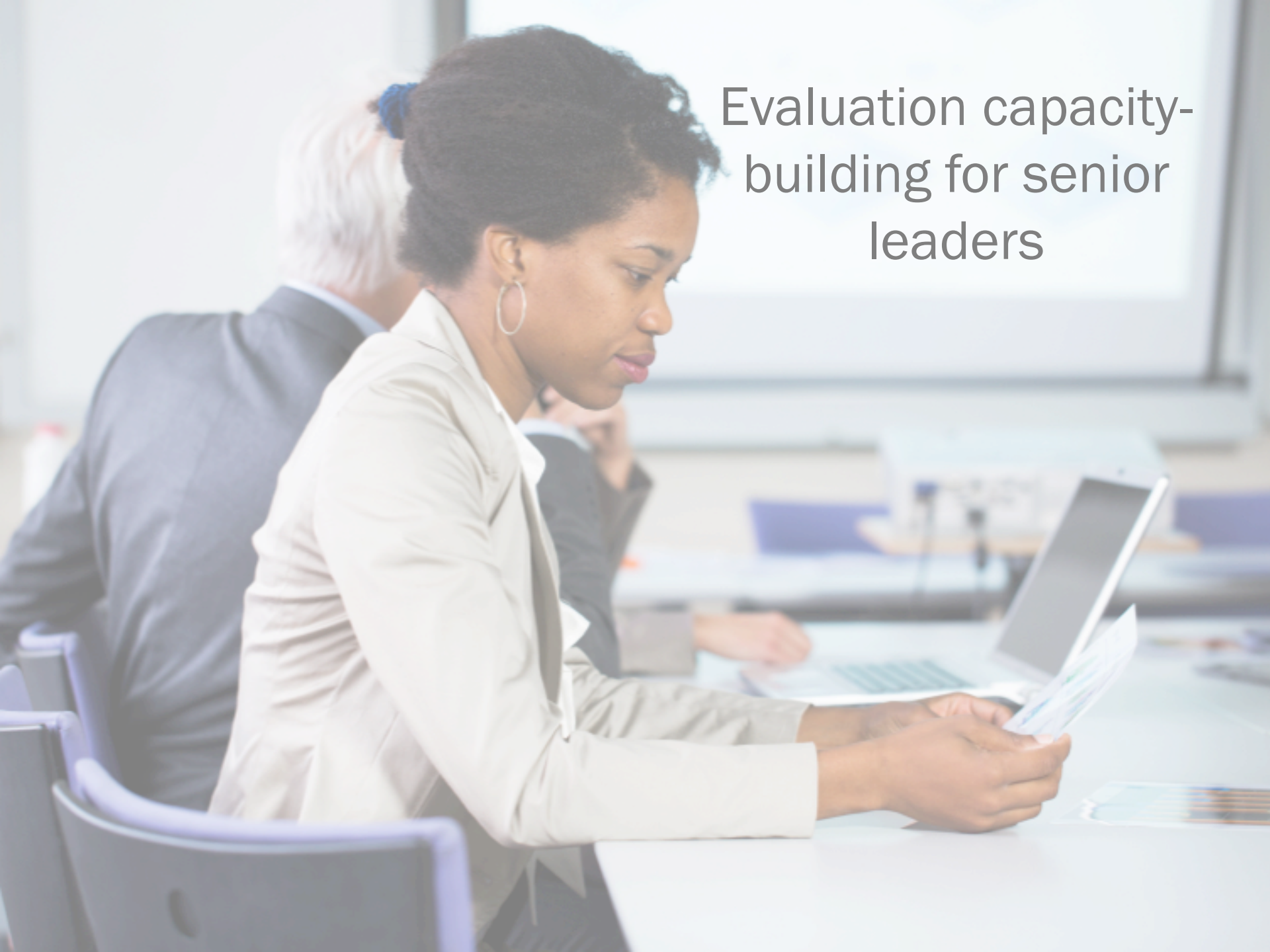
A top-down view of a wooden desk. In the top left corner, a portion of a white keyboard is visible, showing keys for G, H, M, B, N, V, and command/option keys. In the top right corner, a portion of a spiral-bound notebook with a grid pattern is visible. A silver and black pen lies diagonally on the right side of the desk. In the center of the desk is a black tablet with a white rectangular area in the middle. Inside this white area, the title "Mobile Learning in Evaluation for Senior Decision-makers" is written in a dark grey, sans-serif font, centered and arranged in four lines.

Mobile Learning in Evaluation for Senior Decision-makers

Ali Boyle, BC Children's Hospital BC

Chris Lovato, UBC School of Population and Public Health

Kylie Hutchinson, Community Solutions Planning & Evaluation

A woman with dark hair tied back, wearing a light-colored blazer and large hoop earrings, is seated at a conference table. She is looking down at a document she is holding in her hands. In the background, another person with white hair is partially visible, also seated at the table. A laptop is open on the table in front of her. The setting appears to be a professional meeting or training session.

Evaluation capacity- building for senior leaders



Unit 1: Your Strategic Tool

Evaluation & Decision-making

How much of a role does evaluation play in your day-to-day decision-making?

A lot

It informs most
decisions I make

Some

But I don't always
have it when I need it

Not enough

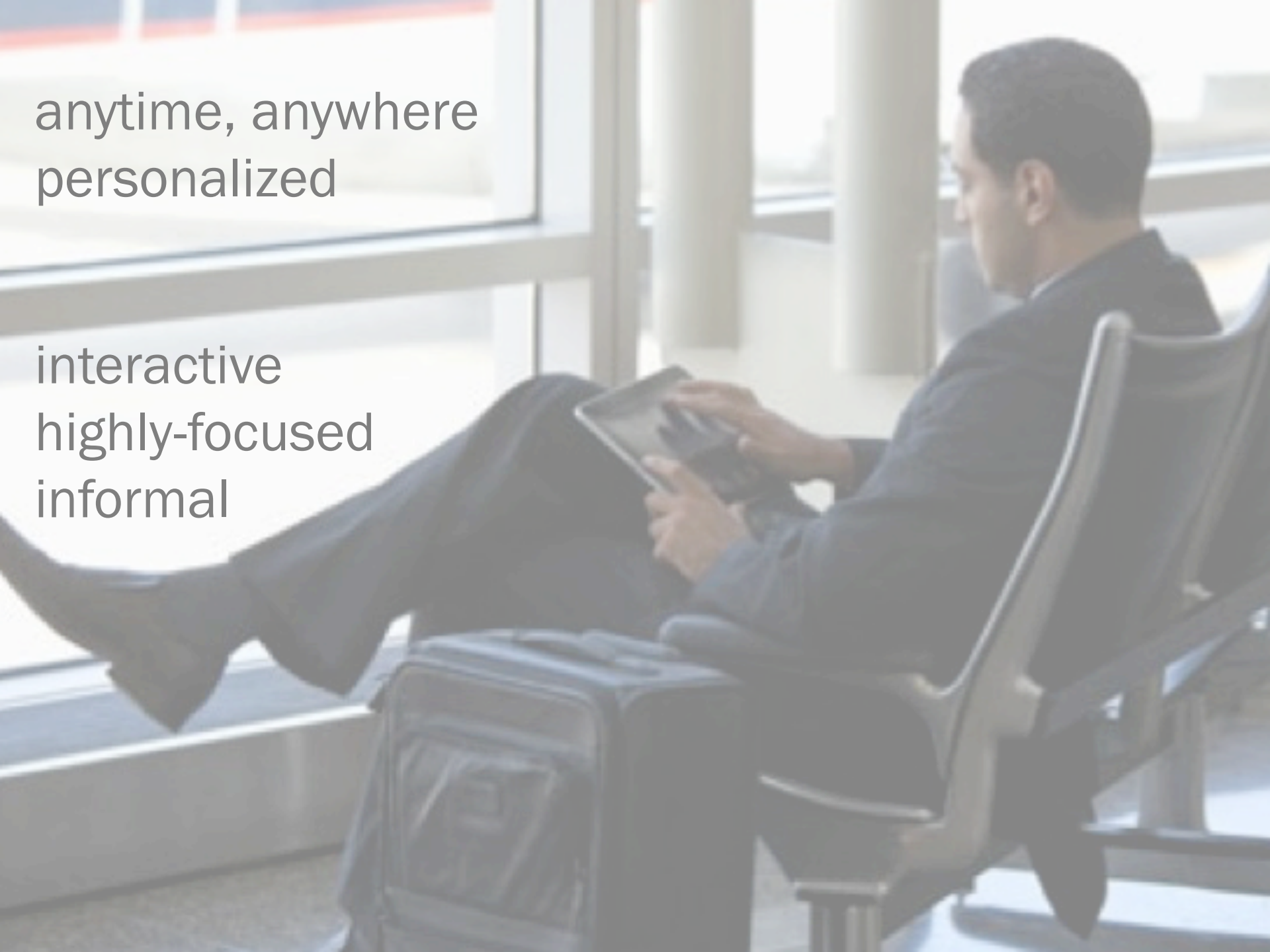
I wish I could use it
more

< Back



anytime, anywhere
personalized

interactive
highly-focused
informal



Unit 1

Your Strategic Management Tool

Unit 2

Evaluation Basics

Unit 3

What is Credible Evidence?

Unit 4

Systems & Evaluation

Unit 5

Increasing Utilization

Unit 6

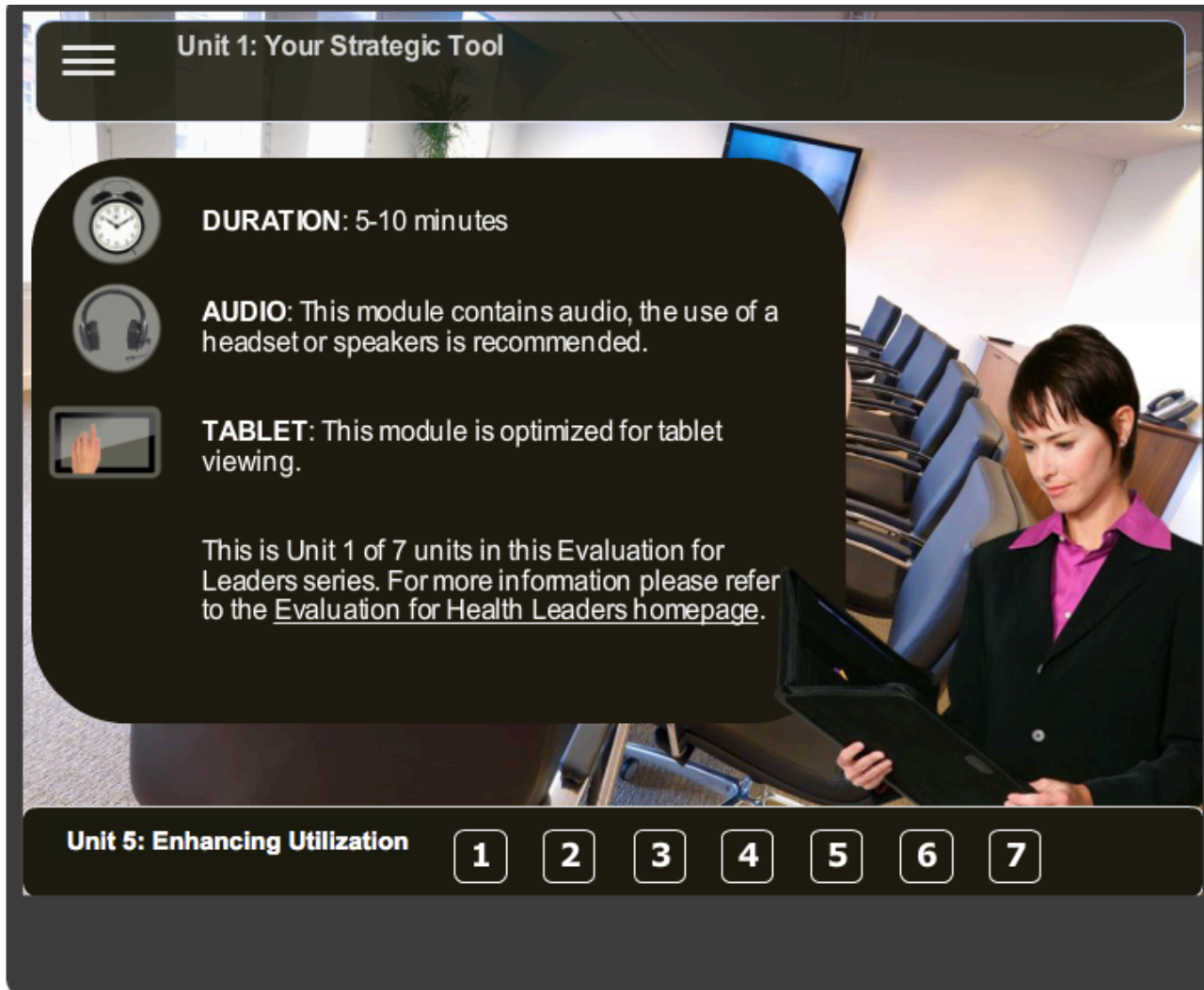
Managing Evaluation

Unit 7

Supporting Evaluation

The
Cutting
Room
Floor





Evaluation of content and design



Beta testers

15 health leaders

1 physician

9 internal evaluators

2 mobile tech experts

Data Collection

telephone interviews with health leaders

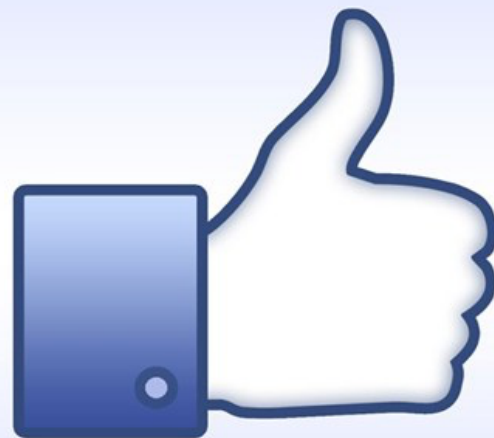
focus group with internal evaluators

end-of-unit surveys

end-of-course survey

key informant interviews with tech experts

Like





Mobile format



Short and succinct units

Unit 4

Systems & Evaluation

Unit 5

Increasing Utilization

Unit 6

Managing Evaluation

Unit 7

Supporting Evaluation



*Most
engaging
relevant, and
practical*

Course content

“...after unit 4... all of a sudden it became, ‘Wow, this is for me’. It got me quite engaged because of the systems thinking and looking at things just a little more strategically and at a higher level.”

Health Leader



Dislike

Logic Model Puzzle

1. Try developing a logic model yourself for this teen pregnancy prevention program.
2. Move each "sticky note" to the correct logic model column. Click each heading for a definition refresher.
3. Click Submit.

Inputs	Activities	Outputs	Short-term Outcomes	Intermediate Outcomes	Long-term Outcomes
<div>education manuals</div> <div>teens provide proper care, feeding, & social interaction to their babies</div> <div>more teens follow proper nutrition & health guidelines</div>	<div># of home visits made</div> <div># of teens attending parenting classes</div> <div>more babies achieve appropriate 12-month milestones</div>	<div>hold parenting classes on prenatal nutrition & infant development to pregnant teens</div> <div>provide RN home visits</div> <div>part-time RN instructor</div>	<div>teens are more knowledgeable of proper care, feeding, & social interaction with infants</div>	<div>more teens deliver healthy babies</div> <div>facilitate peer support groups</div>	<div>teens are more knowledgeable about prenatal/infant nutrition</div> <div>program manager</div>

< PREV

SUBMIT

Expected more interactivity & personalization



UNIT 2: Evaluation Basics

Logic Models

You will find logic models useful in four main areas:

Evaluation

Program Planning

Communication

Management

Evaluation

Builds consensus around a program's anticipated outputs and outcomes and *Theory of Change*.

Identifies possible outputs and outcomes for inclusion in an evaluation framework.

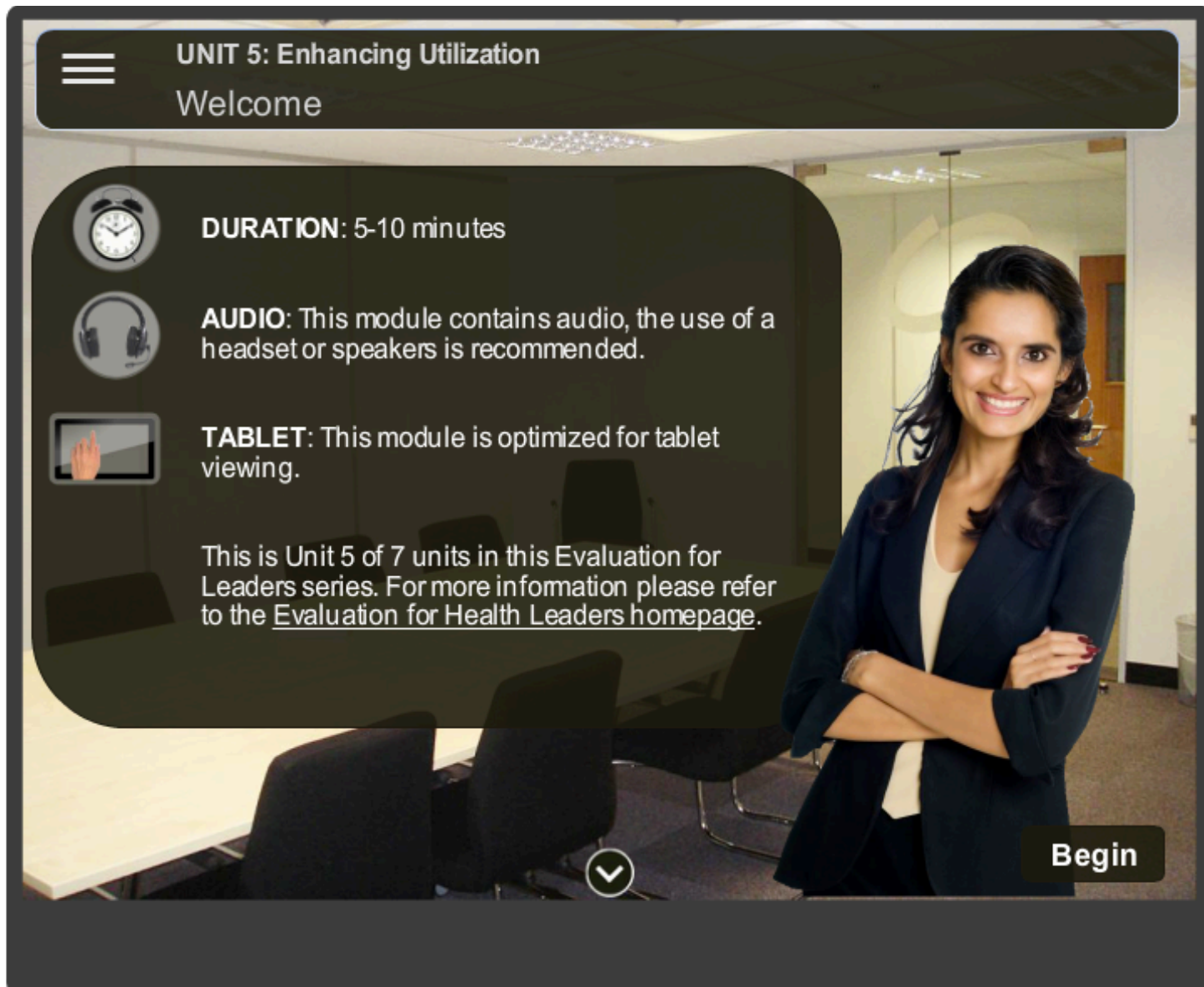
Indicates early baseline data for collection.

< Back



Evaluation Questions >

Some had difficulties with navigation



Some disliked stock photos and audio

Unit 1

Your Strategic Management Tool

Unit 2

Evaluation Basics

Unit 3

What is Credible Evidence?

← Too basic

Course content



Majority of health leaders found it a valuable way to increase their knowledge and interest in evaluation



Most would recommend to a colleague if improvements made to content and design

Recommendations



Revise target audience to include mid-level managers and directors



Revise Units 1-3 to be more engaging
and relevant



Increase interactivity and gamification



UNIT 4: Systems Thinking

Your Practice

How often do you practice systems thinking in your role as a decision-maker?

A Lot

It underlies much of what I think and do on the job

Sometimes

I understand what it is but don't always use it

Never

I've heard of it but I'm not sure how it applies to me

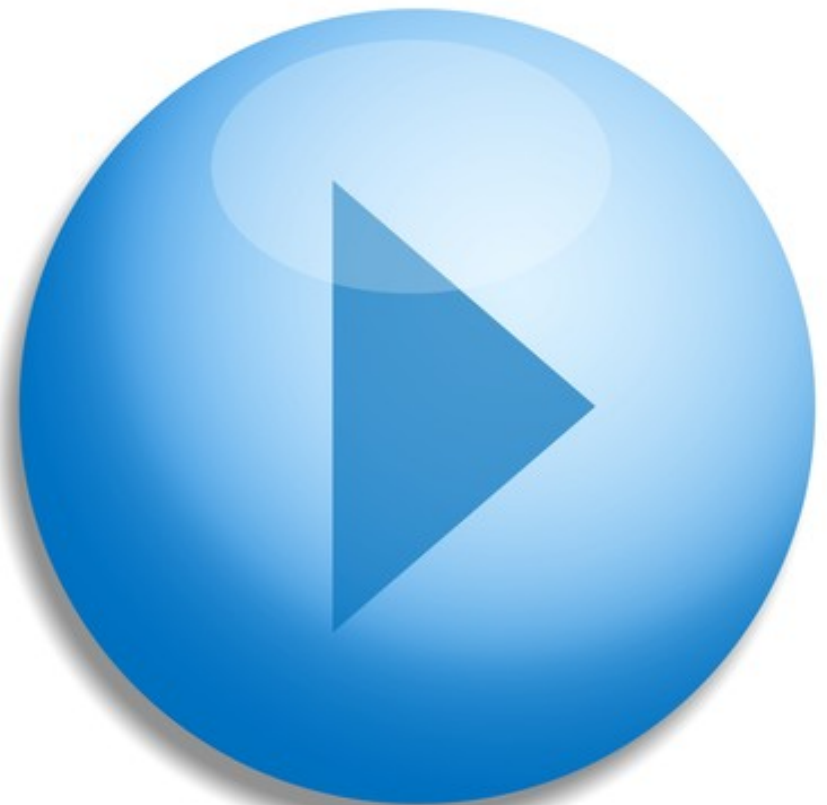
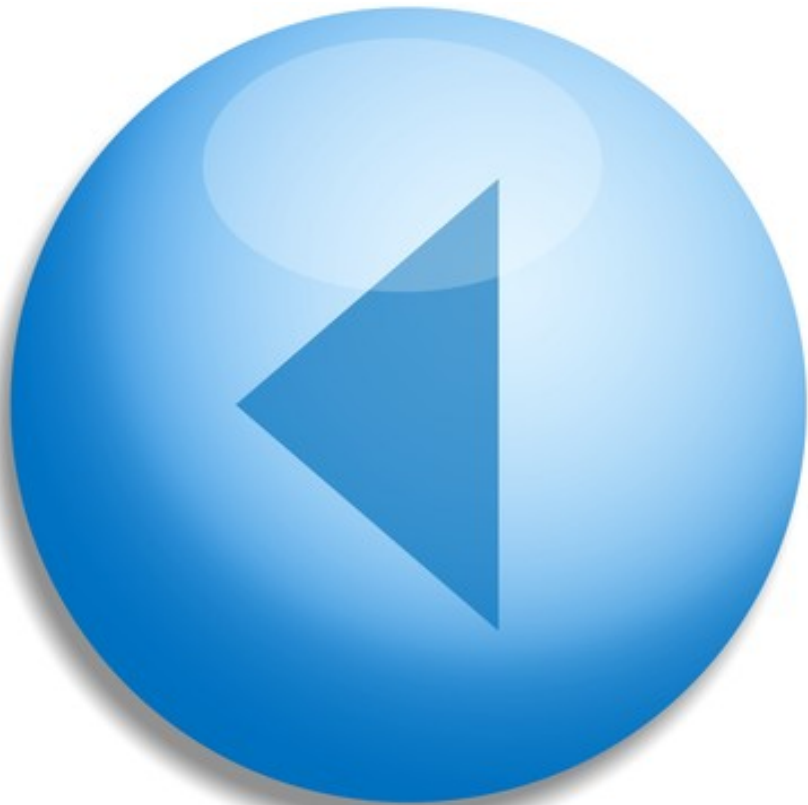
Systems-thinking uses a holistic approach to examine complex and dynamic phenomena by considering how individual parts of a system are connected and interact.

< Back



Systems Thinking >

Personalize question and answer options



Improve course navigation

“I think there is lots of room for improvement, but I just wanted to say I am very excited about this tool and to have it available to share.”

Evaluator

“I am looking forward to it coming out because I sure would like to share it with my leadership team and all my project managers because for them it would be a really great way of us getting on the same page with some common language.”

Health Leader

Moving forward

Developers



Chris Lovato
School of Population and Public
Health
University of British Columbia
chris.lovato@ubc.ca



Kylie Hutchinson
Community Solutions, Planning &
Evaluation
kylieh@communitysolutions.ca